



Garden Heater

Side Extending Shelves

Optional accessory fitting instructions



PLEASE RETAIN THIS GUIDE FOR FUTURE REFERENCE

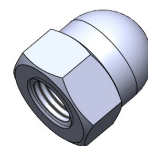
Garden Heater Side Extending Shelves

1. Contents Of Kit :

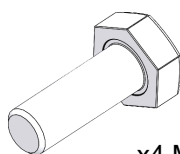
Arada Part Code : ARA058



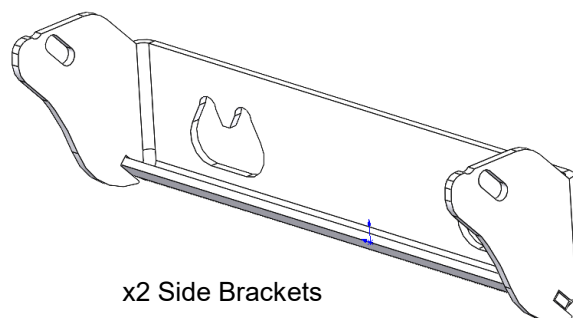
x2 Side Extending Shelves



x4 M6 Dome Nut



x4 M6 x 16 HT Set Screw



x2 Side Brackets

2. Warnings :



IMPORTANT—Please ensure the appliance is cold and unlit before commencing fitting this accessory kit.

Observe safe working practices whilst installing or adjusting these components.

Please refer to the main instruction booklet, relevant to your stove, for guidance and operation of the appliance.

With the appliance in operation, these components will become hot during use. Caution should be exercised in the presence of children and elderly, together with flammable or combustible materials, should not be used on these side extending shelves.

Arada Ltd will not be responsible for any consequential or incidental loss or injury however caused.

Garden Heater Side Extending Shelves

3. Assemble Of The Shelf

Step 1 : Take 1x side bracket and 1x extending shelf, position the side bracket over the extending shelf, align the slotted holes in the bracket with the round holes in the extended shelf. See Fig. 1.

Step 2 : Taking 1x M6x16 HT set screw place this through one of the round holes, with the thread through the slotted hole in the bracket. See Fig. 2. The thread should be exposed outwards, where you can fix 1x M6 dome nut. Only hand tighten this nut with a 10mm spanner, or damage will occur to the bracket. See Fig.3. There will be a gap of approximately 3mm per side.

Step 3 : Repeat the other side of the bracket, with a further 1x M6x16 HT set screw and 1x M6 dome nut.

Step 4 : Repeat steps 1 to 3 for the remaining extending shelf assembly.

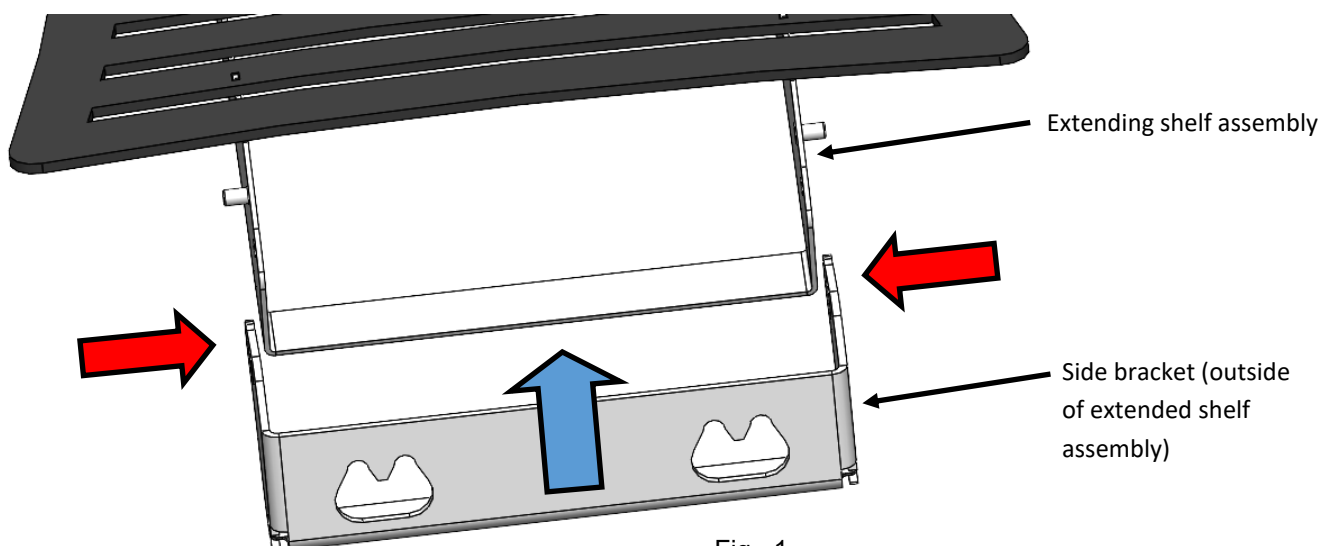


Fig . 1 .

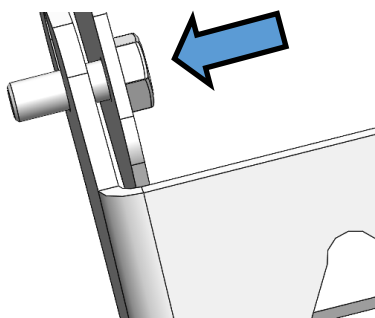


Fig . 2 .

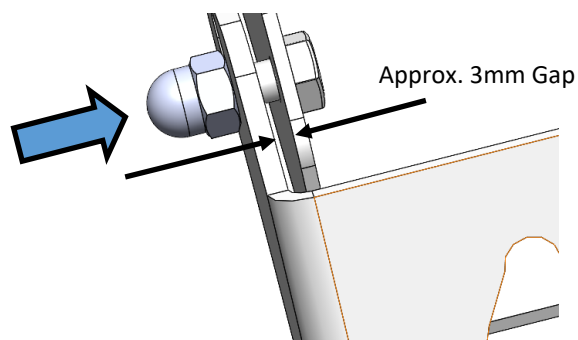


Fig . 3 .

Garden Heater Side Extending Shelves

4. Fitting The Extended Shelf Assembly To The Heater

Step 1 : Ensure that your garden heater is cold and unlit.

Step 2 : Open the fire door and working on the left hand side, locate the 2x side mount nuts, these are located towards the top of the side. Untighten the 2x M8 nuts using a 13mm spanner. There is no need to remove the nut. See Fig. 4.

Step 3 : On the outside of the heater, you will notice that the circular coach bolts will be loose, you will need approximately a 5mm gap, from the body of the heater to the underside of the bolt head, to allow the extended shelf side bracket to slot into place. See Fig. 2.

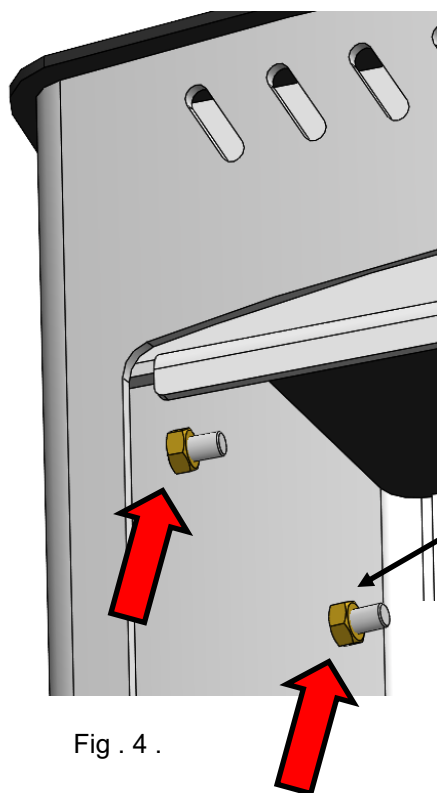


Fig . 4 .

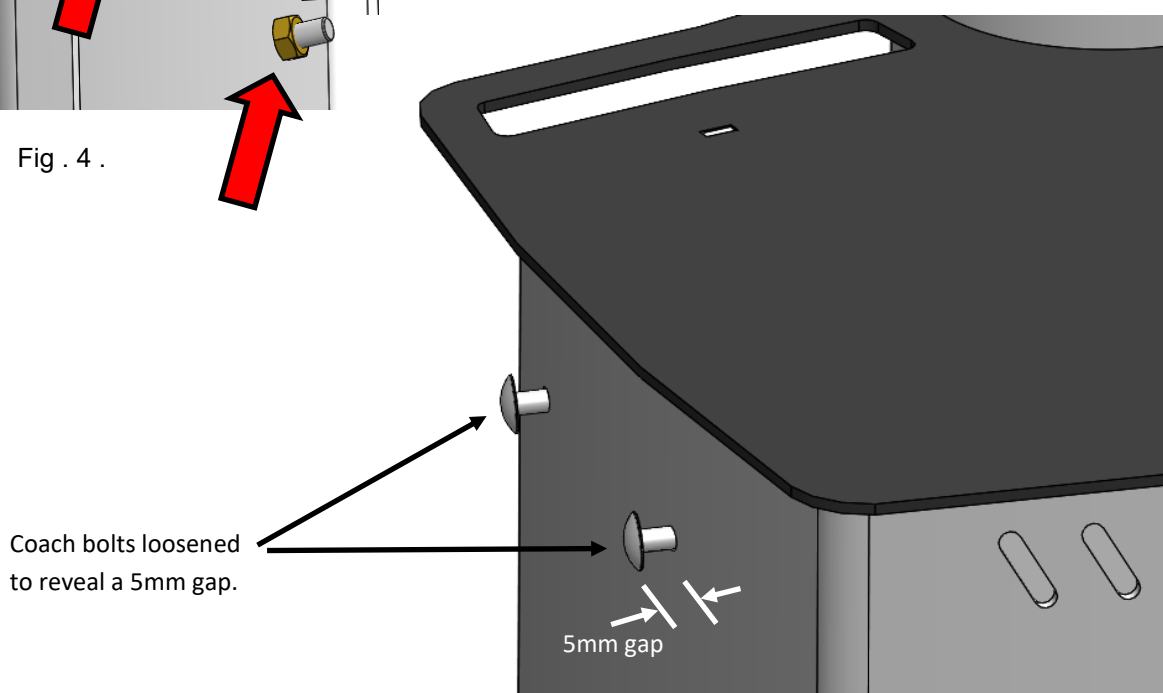


Fig . 5 .

Garden Heater Side Extending Shelves

4. Fitting The Extended Shelf Assembly To The Heater Cont.

Step 4 : Next taking the extending shelf assembly, lower the side bracket over the 2x protruding coach bolt heads (see Fig. 6). Engage the bracket behind the head of each coach bolt and ensure the bracket drops onto the curved recess, see close up Fig. 7.

Step 5 : Working on the inside of the firebox, re-tighten the 2x M8 nuts using a 13mm spanner. See Fig. 8.

Step 6 : Repeat the steps 1 to 5 for the opposite extending shelf.

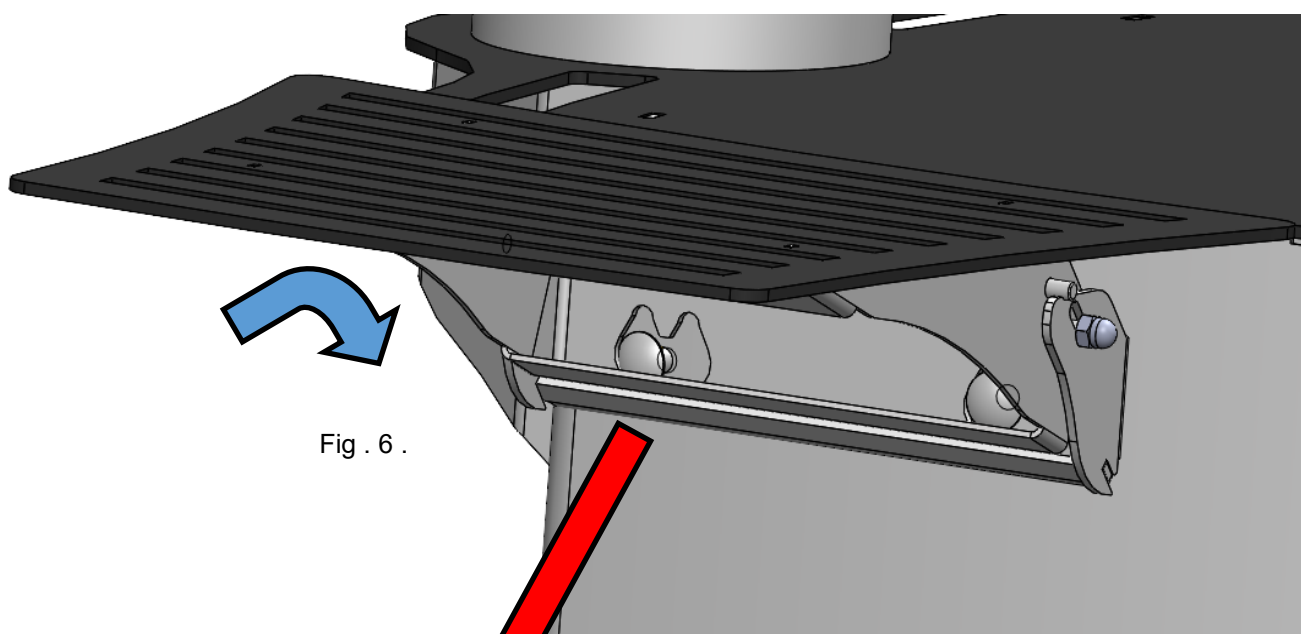


Fig . 6 .

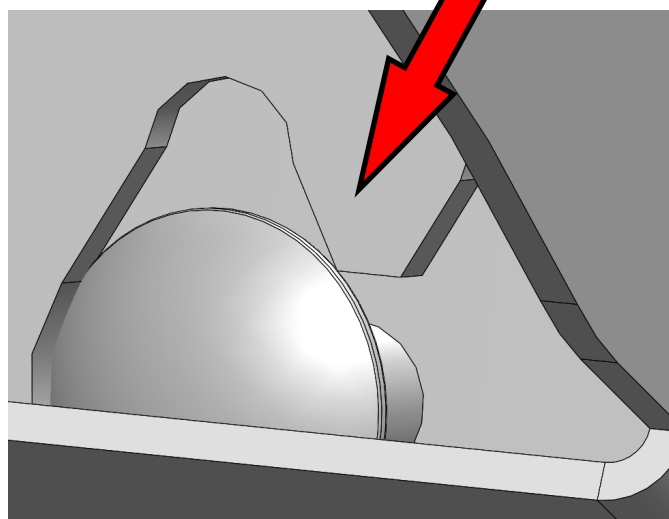


Fig . 7 .

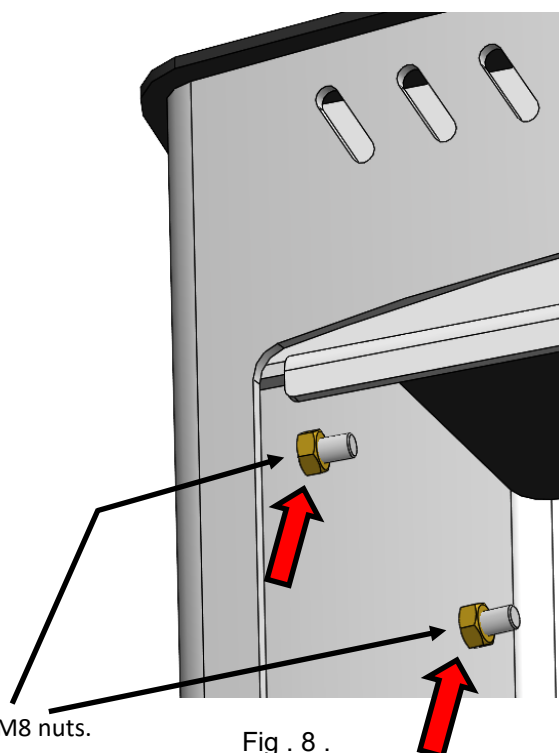


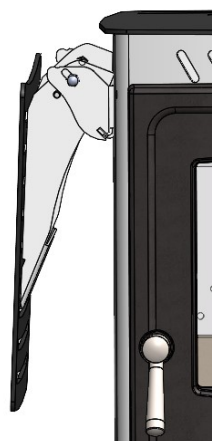
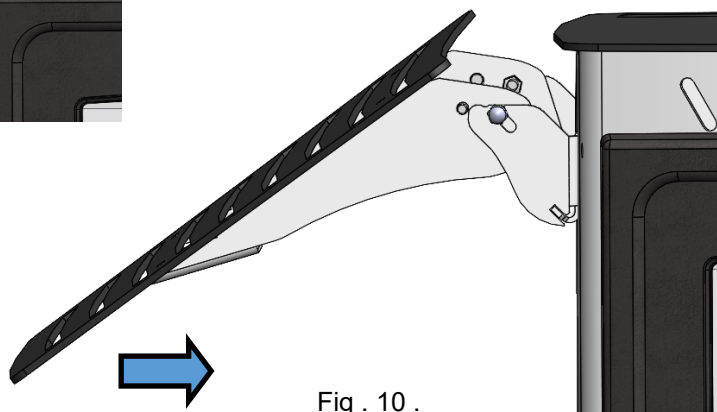
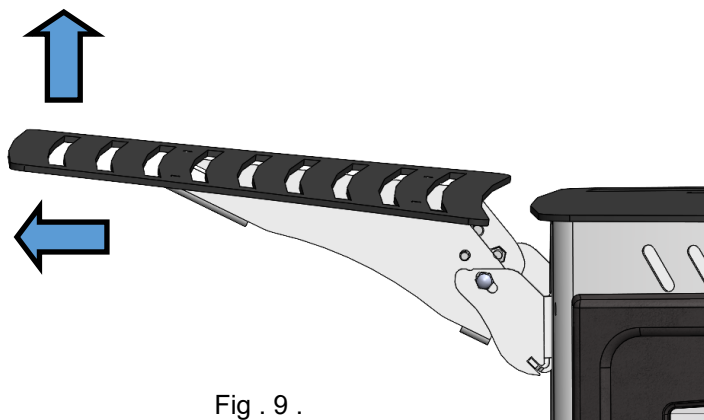
Fig . 8 .

Re-tighten the 2x M8 nuts.

Garden Heater Side Extending Shelves

5. Storage / Folding Of Extended Shelves

To fold the shelf, simply, take hold of the end of the shelf and lift up this end (See Fig. 9). Whilst doing this, gently pull the shelf away from the heater body, together with lowering the end towards the heater body, see Fig. 10. The bottom image (Fig. 11) shows the folded shelf in position.



Arada Ltd

The Fireworks, Weycroft Avenue, Axminster, Devon, EX13 5HU United Kingdom

www.aradastoves.com

www.aradastovesandspares.com

Tel: +44 (0)1297 632 050

