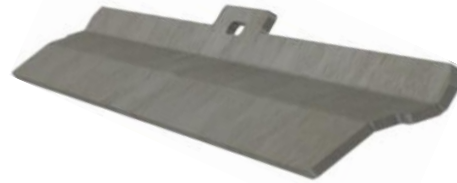


Your Arada Eco boiler 25HE is fitted with a water filled 'shelf' instead of the traditional 'FEDS' assembly to increase the stoves output to water. Therefore the assembly of the stove differs slightly from the instructions in the installation guide supplied with regards to fitting the throat plate / FEDS plate.

The following parts are supplied inside your stove and require fitting:



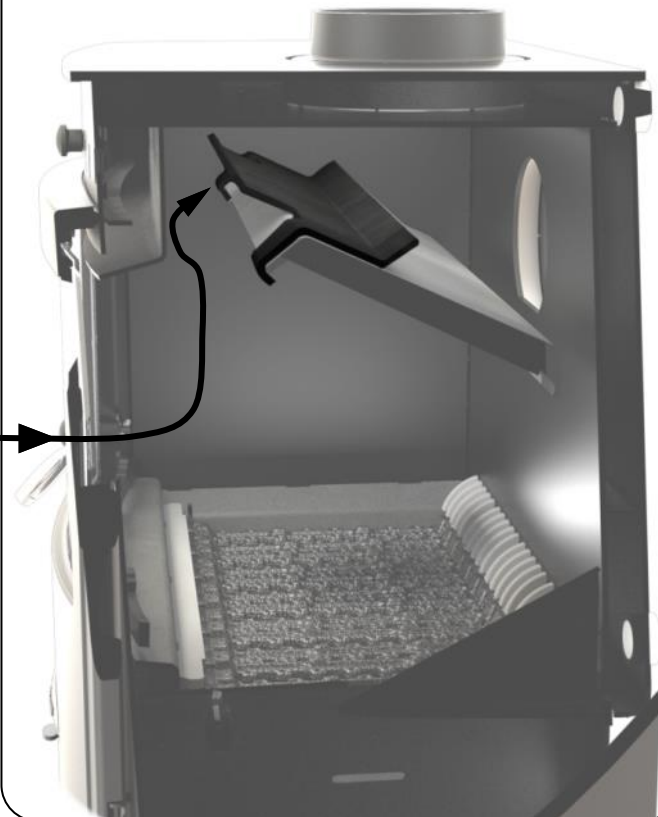
Throat Plate



Rear cleaning / access plate

### Step 1

The throat plate is fitted first by 'offering' the throat plate up onto the shelf with the two locating legs sitting against the front side of the water shelf. It is virtually impossible to fit upside down as it will not stay in place. Take care not to do this though, as it may slide to the back of the shelf and prove difficult to retrieve.



### Step 2

The rear cleaning / access plate should be fitted next. Slide the plate up between the gap at the back of the shelf and the rear of the fire bed. The location tab should rest at the bottom of the rear flue outlet, Please note the 'S' shape of the plate and ensure that it is the correct way as illustrated so as to form a slight trough rather than a raised lip.

