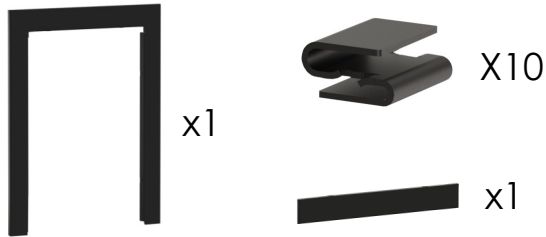


i Series Trim Installation Guide

Our i Series range of stoves can be installed in either an elevated or floor standing position. The following instructions describe how to fit either the 30mm or 60mm optional trims to the cassette stove.

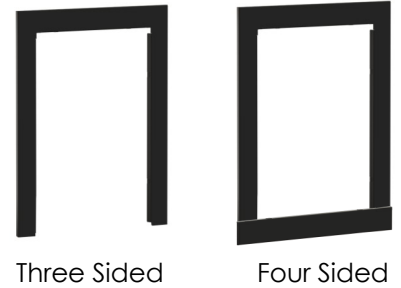
Do not install while the stove is hot or in use. Observe safe working practices (please refer to the stoves Installation Guide) whilst installing these trims.

Parts Included



Options

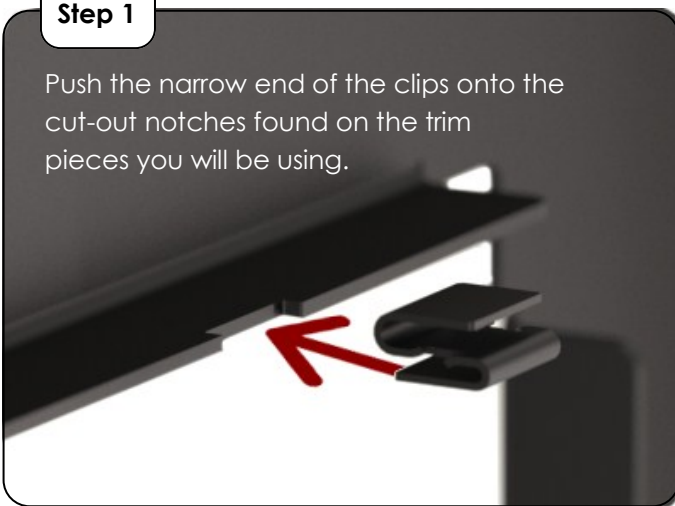
You can configure either a three or four sided installation with the included parts.



Note: The stove needs to be installed with the front outer jacket edges sitting 5mm proud of the wall surface to enable the trims to 'clip' into place.

Step 1

Push the narrow end of the clips onto the cut-out notches found on the trim pieces you will be using.



Step 2

Repeat this for all the notches on the trim(s).



Step 3

Push the trim onto the outer 'jacket' of the stoves front facia. If you are installing both pieces, first fit the single sided piece, then the triple one.



Step 4

Ensure that you have firmly pushed the pieces together.

