
ARADA
— DEVON —

Solid fuel kit fitting guide

Optional accessory instructions

EN 13240:2011 +A2:2004

BK 735 Rev 02

ISSUE DATE : 14/01/2020

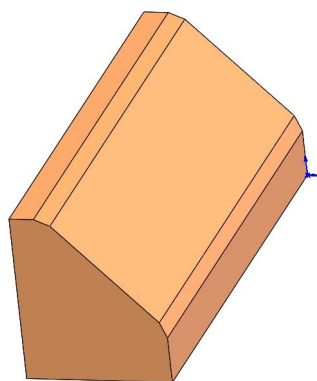


Solid fuel kit fitting guide

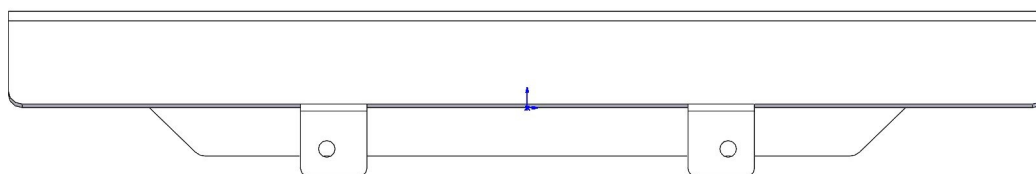
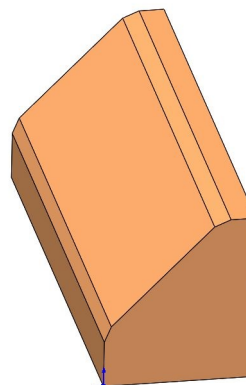
1. Contents Of Kit :

Please Note—Shape Of Components May Vary Depending Upon Model

1 no.
Solid Fuel Liner
(Ceramic—Left
hand)



1 no.
Solid Fuel Liner
(Ceramic—Right
hand)



1 no. Solid Fuel Retainer

2. Warnings :



IMPORTANT—Please ensure the appliance is cold and unlit before commencing fitting this accessory kit.

Please refer to the main instruction booklet, relevant to your stove, for guidance and operation of the appliance, when using solid fuel.

Arada Ltd will not be responsible for any consequential or incidental loss or injury however caused.

Please note, this accessory kit can be fitted once the appliance (stove) has been installed and connected to the flue system, within the property.

Note, no technical knowledge is require to fit this kit.

Solid fuel kit fitting guide

3. Fitting Procedure

Before starting this process, please ensure that the firebox is cold and all the ash bed has been removed and cleaned.

Step 1 : Open the fire door & carefully remove the original fuel retainer. Keep this safe for future use.

Step 2 : Take the operating tool and insert the fork end into the location slots within the rear of the grate surround. Proceed to lift the grate surround up and with draw it from the firebox. See figure 1.

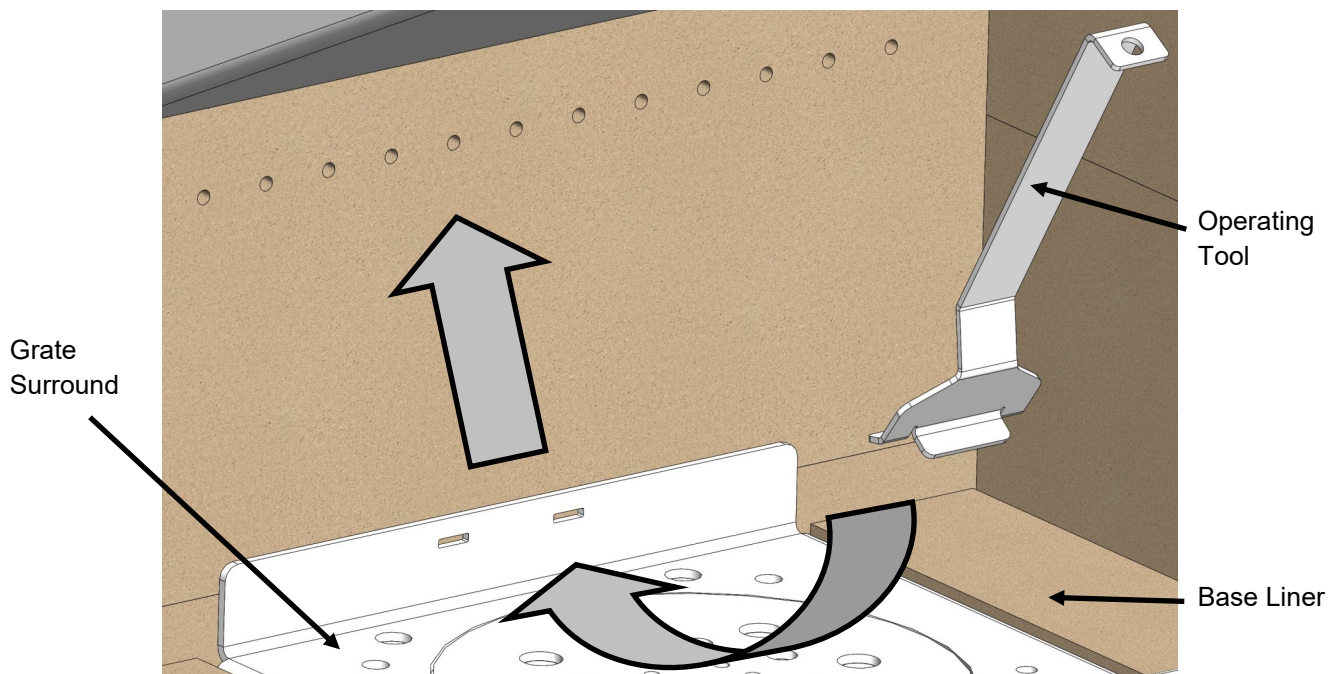


Figure 1. Removing The Grate Surround

Step 3 : Remove both of the base liner either side of the revolving grate. Again keep these safe for future use in the even that the appliance is returned back to a wood only device.

Step 4 : Take one of the ceramic solid fuel base liners and place into the firebox along side the revolving grate. Ensure the largest side of this liner is against the side liner. See figure 2. Repeat the process for the remaining side.

Solid fuel kit fitting guide

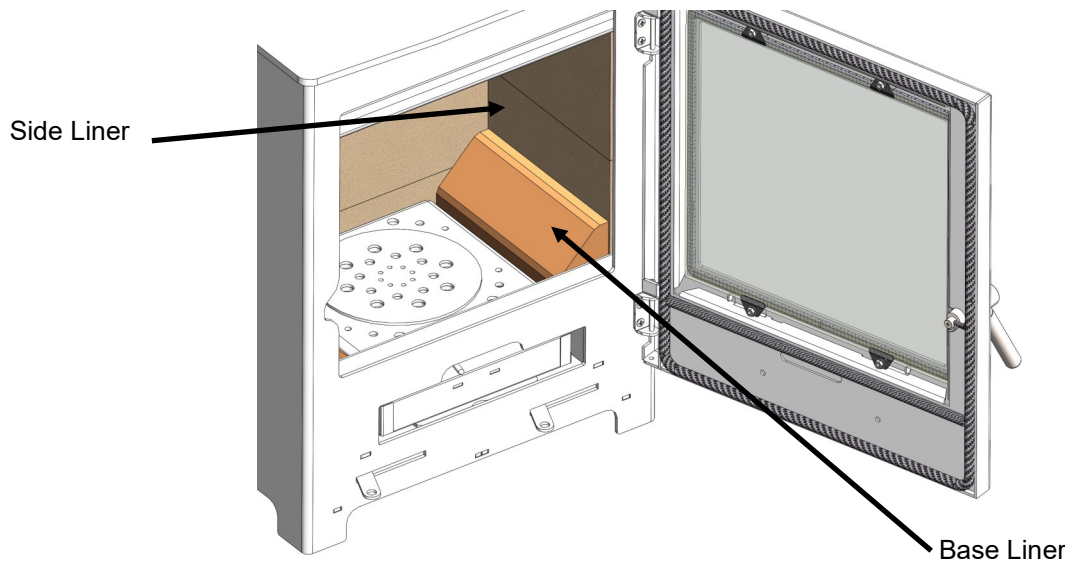


Figure 2. Placement Of Base Liner

(Largest face against Side liner).

Step 5 : Finally place the solid fuel retainer into position, engaging the two tabs within the front brace of the appliance. See figure 3. The appliance is now set for solid fuel use.

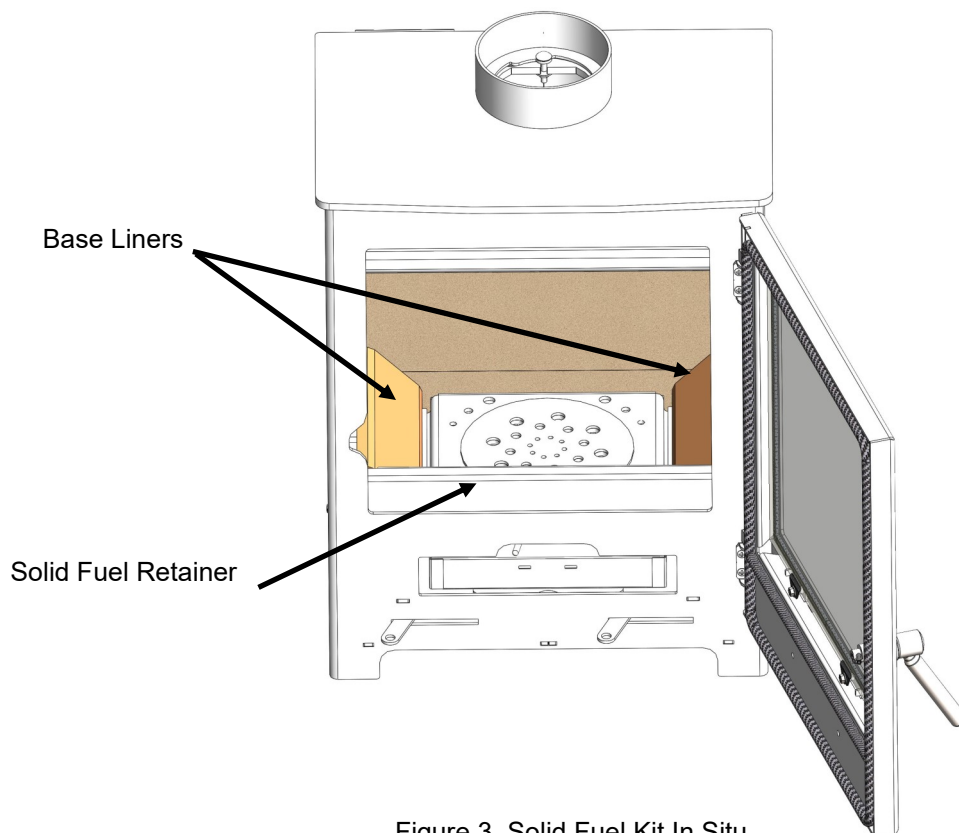


Figure 3. Solid Fuel Kit In Situ