



I-Series (S3) Direct Air Installation

Accessory fitting instructions

PLEASE RETAIN THIS GUIDE FOR FUTURE REFERENCE

EN 13229:2001 +A2:2004

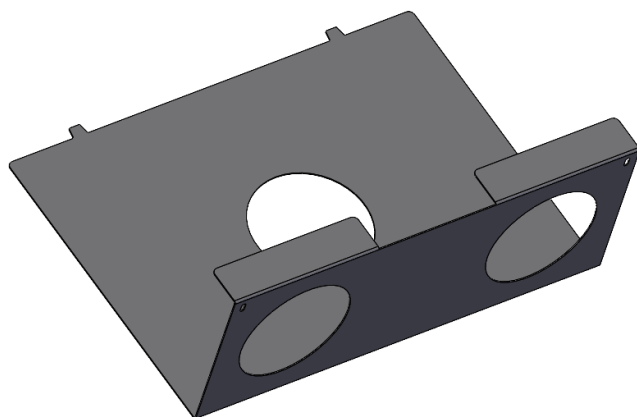
BK 785 Rev 01

ISSUE DATE : 17/02/2025

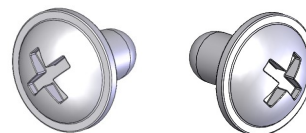
**UK
CA**

I-Series (S3) Direct Air Installation

1. Contents Of Kit :



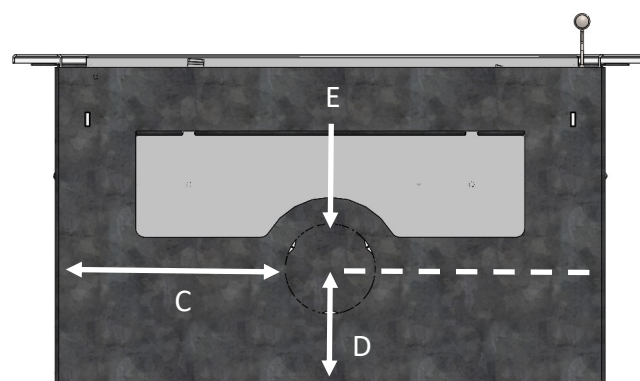
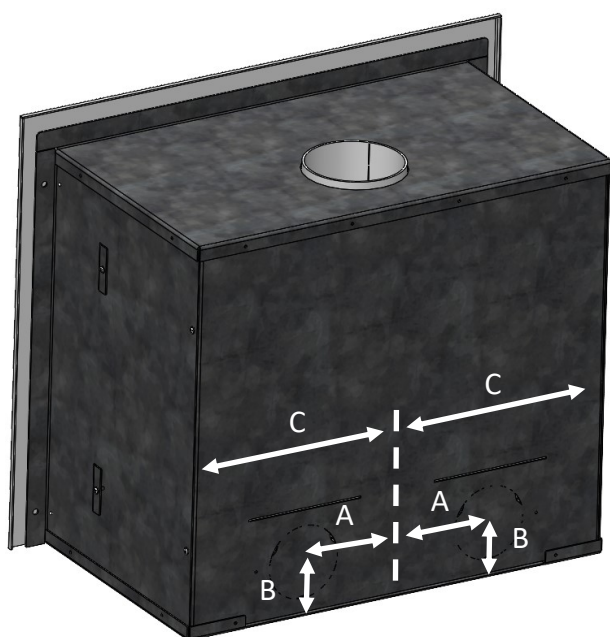
x1 Direct Air Connection (Model Size Specific)



x2 Self Tapping Screws

&

2. Dimensions :



Reference	Dimension
A	139mm (I600-S3) / 120mm (I500-S3) / 101mm (I400-S3)
B	78mm (All Models)
C	Centre Line Of External Casing
D	130mm (All Models)
E	Diameter 102mm (All Models)

I-Series (S3) Direct Air Installation

3. WARNINGS:



When connecting the appliance to external air (direct air) the duct must be a minimum diameter of 100mm and be constructed from a non combustible material and ducted to the outside in a manner that will not effect the performance of the appliance. Ensure no sharp bends and a maximum duct length of 10 Metres. Where the duct terminates on an external wall ensure that there is no risk of blockage with leaves or accidental placement of items, also ensuring there is no risk of ingress of moisture or access for rodents. Avoid fitting the air inlet pipe through a wall that may be unduly effected by prevailing winds that may cause a suction effect upon the direct air supply pipe, causing combustion products to be emitted.

Please note, where the appliance is connected to the external air supply and there is no draught stabiliser fitted, then there is no requirement for an additional air vent, provided a successful 'smoke draw test' has been carried out as part of commissioning.

Please ensure that the air inlet vent grills to the dwelling are not obstructed or liable to be blocked.

IMPORTANT— Careful consideration during installation of the appliance is required

NOTE — These instructions are applicable to all models of the I-Series S3 cassette stoves.

IMPORTANT — Please ensure the appliance is cold and unlit before commencing fitting this accessory kit.

Observe safe working practices whilst installing or adjusting these components.

Please refer to the main user guide & installation booklet, relevant to your stove, for guidance and operation of the appliance.

Arada Ltd will not be responsible for any consequential or incidental loss or injury however caused.

4. Fitting Procedure:

Step 1 : On the rear of the appliance external casing (Fig. 1), insert the direct air connection plate into the base slot, as indicated in Fig. 2.



NOTE : The fitting procedure is the same regardless of model / size of appliance.

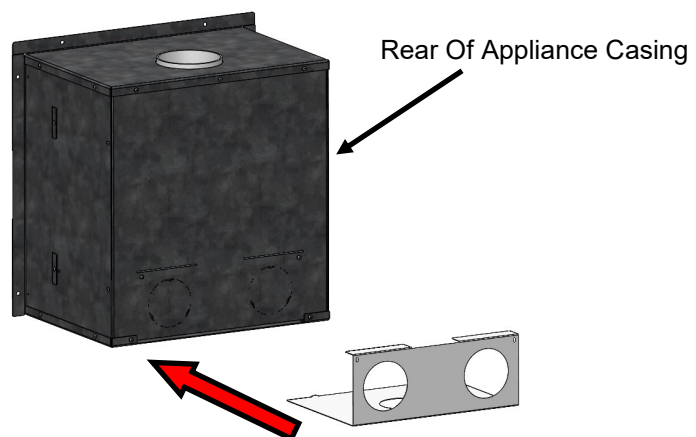


Fig. 1. Rear Of Appliance

I-Series (S3) Direct Air Installation

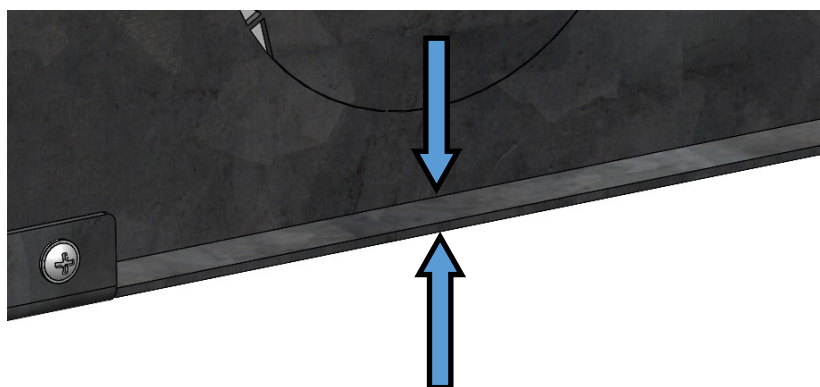


Fig. 2. Base Slot Detail

Step 2 : Engage the upper two tabs on the direct air connector and push home the connector.

Step 3 : Fix the connector in place with the 2x provided self tapping screws, see Fig. 3.

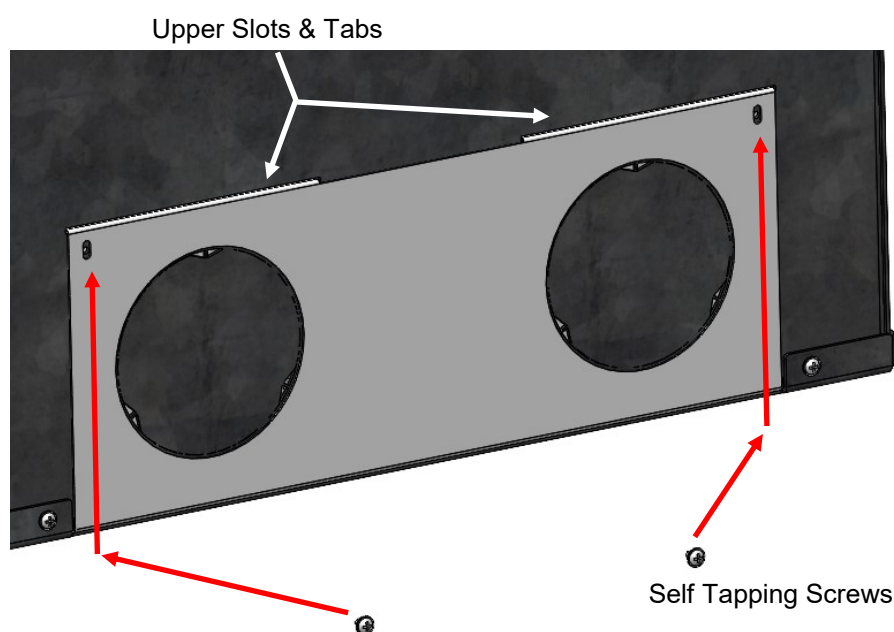


Fig. 3. Fixing The Direct Air Connector

Step 4 : With the direct air connector fitted as above, this gives the installer the option to connect the air inlet ducts to either of the rear outlets or the outlet on the base of the appliance.



CAUTION :

ONLY ONE REAR DIRECT AIR CONNECTION IS REQUIRED PER INSTALLATION.

Arada Ltd, The Fireworks, Weycroft Avenue, Axminster, Devon, United Kingdom EX13 5HU



Made In The UK